



PREPARATION OF PHOTO ELECTORAL ROLLS

Pre Bid Conference

5th October, 2007

GAD(Elections) Department

Govt. of Andhra Pradesh

OBJECTIVE

- Photo electoral rolls will have photo of each eligible voter (Age 18 yrs. On 1.1.2008) in the electoral roll.
- This photo roll will help the presiding officer of the polling station to identify the voter correctly.
- Total no. of voters for 22 districts (except Hyderabad) is 5.07 crores



STARTING POINT

- Electoral Rolls as on 1.1.2007 is the starting point
- Photographs taken during EPIC campaigns (Yr.2003 and 1995) are to be merged (details in Annexure I of the bid document)
- From them we generate the preliminary voters lists which will be carried by the House to house enumeration teams for enrollment of the voters



STAGES OF WORK

- House to House enumeration of voters
- Getting the data and photographs from the field and entering in the available database.
- Generate and print the draft rolls
- After getting claims and objections on the published draft rolls, do the data entry and linking photographs and generate final photo-electoral rolls



SCOPE OF WORK

- Final Outputs: Generation and Printing of Preliminary voters list, Draft photo-electoral rolls and Final photo electoral rolls.
- Data Entry of the field enumeration data including new entries and modification of old entries. Once again data entry at claims and objections stage
- Getting photographs of voters in the shape of digital photographs in the field by hiring cameramen and by scanning the passport size photos provided by voter instead of digital photos and linking them to the related data.
- Updating the reporting system at the required frequency (pages 16 to 18 of the bid document)



ALLOTMENT OF WORK & MONITORING

- District is a Unit for award of the Work
- District Collector is the monitoring agency and payment authority
- Contract will be awarded by CEO , AP on the recommendation of the Tender Committee
- Overall supervision by CEO, AP
- Assembly Constituency within the District is the main operation Unit
- Data and the work allotment last level unit is Polling Station

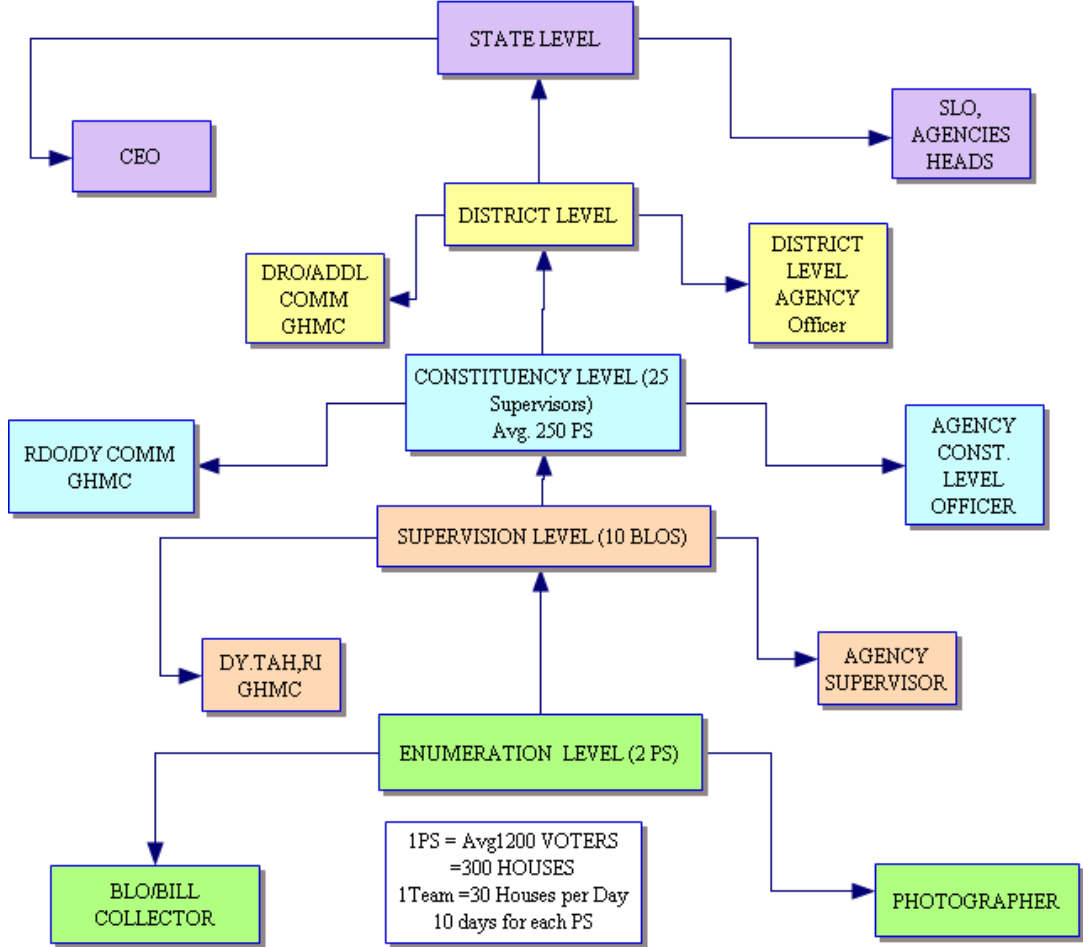


TIME FRAME & MANPOWER REQUIREMENT

- Work will start in all Assembly Constituencies simultaneously.
- House to House enumeration days =75
- No. of Cycles for the enumeration = 8
- At any given point of time no. of teams working will be Total no. of polling stations in the constituency divided by 8
- Average no. of houses covered by each team each day =30 (About 120 voters)



PHOTO E-ROLL MONITORING STRUCTURE



FIELD UNITS-ENUMERATION TEAM

- BLO – Booth Level Officer , is the leader of the team for enumeration
- Photographer is the other member of the team to be supplied by the agency for each BLO
- One Election Wing supervisor for monitoring the work of 10 BLOs
- One Agency Supervisor to monitor the work of data entry related to these 10 BLOs



SUPERVISORY UNITS(BACK OFFICES)

- One Supervisory Unit or Back Office for One supervisor who caters for 10 BLO enumeration data entry work
- Apart from supervisor, Two data entry operators in each back office who download the images from cameras, scans the passport photos and who enters new data, modifies old data and prints the checklists for corrections by BLOs.



CONSTITUENCY LEVEL MANPOWER

- ERO/Constituency In-charge from Election Wing
- Agency to supply one Constituency Level Supervisor to monitor overall work for the constituency.
- Data Entry operators at Constituency Level Office for segregation and integration of data related to polling stations and for direct data entry from claims and objection received. Here the operator generates preliminary voters lists, draft rolls and final rolls for all the Polling stations in the constituency.



DISTRICT LEVEL MANPOWER

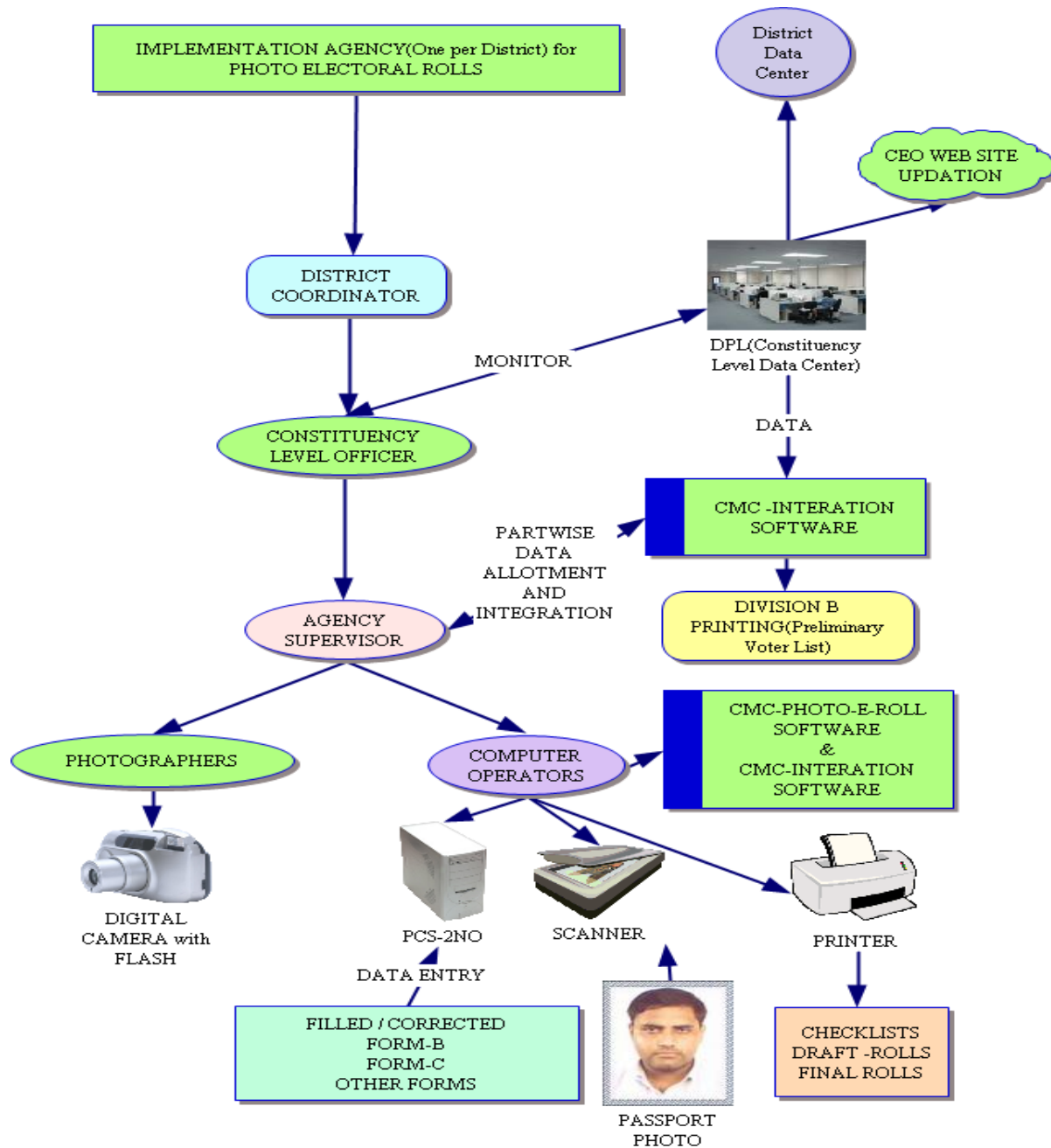
- District Collector is supervising the complete work of photo electoral rolls for his district.
- Agency will supply one District Level Coordinator for monitoring and supervising the total teams deployed by the agency including his cameramen , operators and supervisors at various levels and the agency constituency coordinators.



HARDWARE

- Constituency Level
 - One Pentium IV computers with given specs in bid document Page 22
 - One Scanner as per bid document
- Supervisory Level
 - Two Pentium IV computers as per bid doc page 21
 - One Laser Printer (page 21)
 - One Scanner (page 21)
 - Ups (page 21)
- Enumeration Level - Camera for each photographer
- Reserves for memories, batteries, cameras, computers, scanners, printers etc.





SOFTWARE

- Software is in two modules developed by CMC Ltd.

- **Photo –e – Roll Software**

This is loaded on each computer of the supervisor back office for data entry , downloading of camera photos, scanning of photos, linking and generation of checklists and making output data ready for constituency level unit.

This software is also loaded in constituency Level office computers for claims and objections data entry



SOFTWARE....

- Second module to be used by Agency is
 - Integration of electoral rolls
- This is to be used in Constituency Level Offices where the Initial data will be segregated through this software and again integrated after bringing the field data polling station wise after data entry then generation and printing of the preliminary , draft and final electoral rolls



SOFTWARE..

- Both the modules are developed by CMC ltd.
- Photo –e –Roll module is field tested in Hyderabad and now deployed for use in 13 constituencies.
- PWC is auditing the software modules. On the basis of audit report, CMC will take rectification if any and again PWC will do the final audit and then only the software will be deployed.
- Detailed user manuals are prepared by CMC for both these software modules



DATES

- Last Date of Submission of bid – 16th October , 5 PM
- Technical Bid opening - 17th October, 11 AM
- Display of names of the qualified technical bid agencies – 23rd October at 5 PM at <http://www.ceoandhra.nic.in>
- Commercial Bid opening – 25th October 11 AM
- Tentative Schedule of work Page 29 of the bid document.



THANK YOU

